



Bon Preu Supplier EDI guide

Message = RECADV D96A

Versioned

Version	Date	Concept
1.3	03062024	Current Version

SUMARIO

1. OBJECTIVES OF THE USER GUIDE.....	2
1.1. Advantages of using EDI Standard.....	2
1.2. First steps in the communication. Operational with Bonpreu	2
1.3. Messages, Versions and Mailboxes.....	3
1.4. Observations.....	¡Error! Marcador no definido.
1.5. Branching Diagram	4
1.6. Details of the segments used	5
1.7. Receiving Advise example (RECADV D96A)	11

1. OBJECTIVES OF THE USER GUIDE

The main objective of this EDI User Guide, for the electronic exchange of business documents with Bonpreu, is that it serves to clarify all the aspects involved in each one of the phases that are required to perform the exchanges in an efficient manner.

We consider it important that with this guide; identify all areas of our organization that are involved in the various operational in each time. They should also be clearly identified the areas involved of their organizations, so that the communication flow that occurs is most effective.

If for the first time, you will use the EDI system standard, we believe it appropriate to inform you that this guide contains technical aspects, of communication, EDI message, so that the IT areas of your organizations, they must have essential access to the same.

In the following chapters, you can find information related to the first steps that you should do to make the connection EDI between you and us. You can also find information related to the different documents that we will start to transmit and the content of the same.

1.1. Advantages of using EDI Standard

Currently, the supply chain between manufacturers and dealers requires that the flow of goods is as efficient as possible to avoid breakage of stock on the shelves, as well as expedite the payment of invoices.

To do this, the exchange of business documents, you need a tool to avoid delays. The tool or system of exchange is the standard EDI (Electronic Data Interchange), the use of which effectively allows the reduction of the cycle of the supply chain and the costs that you are incurring along the same.

As general advantages and particulars of the EDI standard in Bonpreu we can mention:

- Use a common language valid for all partners with the messages existing standards.
- Minor incidents in all of the administrative processes due to the non-manipulation of data.
- Cost of transmission is less than the load of data in information systems, compensating and amortised quickly the investment in software.

As a summary, we can say that it is a competitive advantage for any company, whether manufacturer, distributor or logistics operator.

1.2. First steps in the communication. Operational with Bonpreu

Those providers that it is the first time you go to use the System of Electronic Data Interchange it is necessary to know the parties involved in this system and the first steps to enter in this area.

- The Manufacturers, Distributors, dealers, Stores, Dealers and logistics Operators are the users of this system of electronic data interchange.
- Software vendors, who provide and implement programs to be able to make exchanges and to translate the different messages.
- Value-added networks (data transmission) to put their infrastructure in order to produce communication between the different users, and allow for the possible interchange between different networks and in different places.

For more information, you can contact with the EDI services supplier, SERES (902424342) or in his web (<http://es.grouperes.com>).

1.3. Messages, Versions and Mailboxes

Messages that Bonpreu interchange will be:

- RECADV D96A

The Bonpreu mailboxes are:

- **Bonpreu production** COUNTRY=FR ADM=ATLAS PRMD=SERES O=ALLEGRO-ES OU1=EDI SURNAME=EDISERV GIVENNAME=8422410000005
- **Bonpreu Test** COUNTRY=FR ADM=ATLAS PRMD=SERES O=ALLEGRO-ES OU1=EDI SURNAME=EDISERV GIVENNAME=8422410000005
- **Who Order (Buyer):** Bonpreu EAN Code
- **Who receives the goods (Receiver):** EAN Store/Dealer Code
- **Who is billed:** Bonpreu EAN Code (8422410000005)
- **Who pays (the Payer):** Bonpreu EAN Code

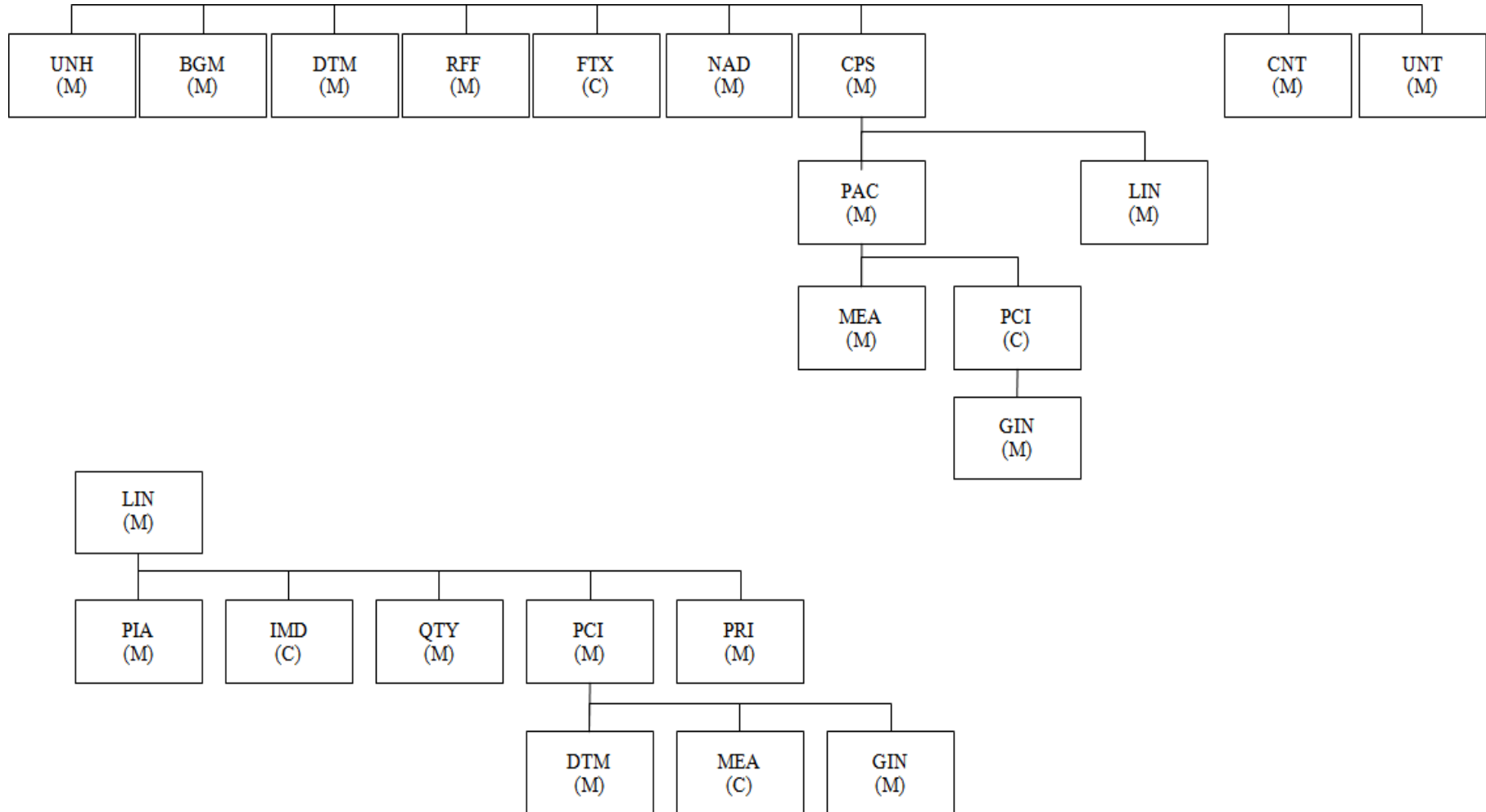
1.4. Comments

The confirmation number, as well as defining the RECADV document number, is the Identicket number that is used in the invoice for a Bonpreu.

- Shipment notice number is the Bonpreu delivery note number
- Delivery number is the delivery number of the supplier.
- Order number will be the Bonpreu order number.

IMPORTANT: Bonpreu will generate the RECADV at the time of receipt of the merchandise. Any return and an additional incident from the generation of RECADV, is managed at the administrative level.

1.5. Branching Diagram



1.6. Details of the segments used

UNH		MANDATORY FIELD		
Item No.	Description EANCOM	Tipo	M/C	Value to report
0062	Message reference number	AN..14	M	Sender's unique message reference. Sequence number of messages in the interchange
0065	Message type identifier	AN..3	M	RECADV = Receiving Advice
0052	Message type version number	AN..3	M	D
0054	Sub-version number of the message type	AN..3	M	96A = Directory EDIFACT D.96A
0051	Controlling agency	AN..3	M	UN= Agency responsible for the type of message.
0057	Code assigned by the association	AN..3	M	EAN005 = EAN Version control number.

Example: **UNH+EW666666+RECADV:D:96A:UN:EAN003'**

BGM		MANDATORY FIELD		
Item No.	Description EANCOM	Tipo	M/C	Value to report
1001	Name of the document or message	AN..3	M	351 = Despatch Advice
1004	Name of the document or message	AN..35	M	Delivery note number
3055	Code list responsible agency code	AN..3	M	9= EAN (International Article Numbering Association)
1225	Message function, encoded	AN..3	M	9 = Original

Example: **BGM+352::9+REC5488+9'**

DTM		MANDATORY FIELD		
Item No.	Description EANCOM	Tipo	M/C	Value to report
2005	Date / time / period qualifier	AN..3	M	137 = Document date
2380	Date / time / period	AN..8	M	Document date
2379	Date / time / period format qualifier	AN..3	M	102 = Format CCYYMMDD

Example: **DTM+137:20180410:102'**

DTM		MANDATORY FIELD		
Item No.	Description EANCOM	Tipo	M/C	Value to report
2005	Date / time / period qualifier	AN..3	M	50 = Goods receipt date/time.
2380	Date / time / period	AN..8	M	Goods receipt date/time.
2379	Date / time / period format qualifier	AN..3	M	102 = Format CCYYMMDD

Example: **DTM+50:20180410:102'**

RFF		MANDATORY FIELD		
Item No.	Description EANCOM	Tipo	M/C	Value to report
1153	Reference qualifier	AN..3	M	AAK = Despatch advice number
1154	Reference number	AN..35	M	Despatch advice number

Example: **RFF+AAK:2736626'**

RFF		MANDATORY FIELD		
Item No.	Description EANCOM	Tipo	M/C	Value to report
1153	Reference qualifier	AN..3	M	ON = Buyer Order Number
1154	Reference number	AN..35	M	Buyer's Consolidated Order Number

Example: **RFF+ON:PEDPRO'**

RFF		MANDATORY FIELD		
Item No.	Description EANCOM	Tipo	M/C	Value to report
1153	Reference qualifier	AN..3	M	DQ = Delivery note number
1154	Reference number	AN..35	M	Delivery note number

Example: **RFF+DQ:9999999'**

RFF	MANDATORY FIELD			
Item No.	Description EANCOM	Tipo	M/C	Value to report
3035	Part qualifier	AN..3	M	MS = Sender of the document or message (Origin)
3039	Part identification, encoded	AN..35	M	Sender of the document or message
3055	Agency responsible for code list, coded	AN..3	M	9 = EAN (International Article Numbering Association)

Example **NAD+MS+842241000005::9'**

RFF	MANDATORY FIELD			
Item No.	Description EANCOM	Tipo	M/C	Value to report
3035	Part qualifier	AN..3	M	MR= Receiver of the message (Destination)
3039	Part identification, encoded	AN..35	M	Receiver of the message
3055	Agency responsible for code list, coded	AN..3	M	9= EAN (International Article Numbering Association)

Example **NAD+MR+840000000017:::9'**

RFF	MANDATORY FIELD			
Item No.	Description EANCOM	Tipo	M/C	Value to report
3035	Part qualifier	AN..3	M	SU= Provider
3039	Part identification, encoded	AN..35	M	Provider
3055	Agency responsible for code list, coded	AN..3	M	9= EAN (International Article Numbering Association)

Example **NAD+SU+840000000017:::9'**

NAD	MANDATORY FIELD			
Item No.	Description EANCOM	Tipo	M/C	Value to report
3035	Part qualifier	AN..3	M	BY= Buyer
3039	Part identification, encoded	AN..35	M	Buyer
3055	Agency responsible for code list, coded	AN..3	M	9= EAN (International Article Numbering Association)

Example: **NAD+BY+842241000005::9'**

NAD		MANDATORY FIELD		
Item No.	Description EANCOM	Tipo	M/C	Value to report
3035	Part qualifier	AN..3	M	DP = Receiving part of the merchandise (RECEIVER)
3039	Part identification, encoded	AN..35	M	Receiving part of the merchandise
3055	Agency responsible for code list, encoded	AN..3	M	9 = EAN (International Article Numbering Association)

Example: **NAD+DP+8422410150021::9'**

CPS		MANDATORY FIELD		
Item No.	Description EANCOM	Tipo	M/C	Value to report
7164	Hierarchy identification number	AN..12	M	
7166	Hierarchical predecessor identifier	AN..12	C	Conditional only on the root package

Example: **CPS+2+1'**

PAC		MANDATORY FIELD		
Item No.	Description EANCOM	Tipo	M/C	Value to report
7224	Number of packages	AN..8	M	
7233	Information associated with the packaging, encoded	AN..3	C	Packaging barcode type.
7065	Packaging type, encoded	AN..17	M	200 = Pallet iso (80 x 60 cm) 201 = Pallet iso 1 (80 x 120 cm) 203 = Pallet iso 2 (40 x 60 cm)
3055	Agency responsible for code list, encoded	AN..3	M	9 = EAN (International Article Numbering association)
7064	Packaging type	AN..35	C	EAN13 or DUN14 code of the packaging.

Example: **PAC+1++201::9'**

LIN		MANDATORY FIELD		
Item No.	Description EANCOM	Tipo	M/C	Value to report
1082	Item line number	AN..6	M	Item line number in the Despatch Advice message generated by the application.
7140	Item number	AN..35	M	Item code
7143	Item number type	AN..3	M	EN = International Article Numbering Association (EAN) UP = UPC (Universal Product Code)

Example: **LIN+1++8410500001438:EN'**

PIA		OPTIONAL FIELD		
Item No.	Description EANCOM	Tipo	M/C	Value to report
4347	Product code function qualifier	AN..3	M	1 = Additional identification
7140	Item number	AN..35	M	Item code
7143	Item number type	AN..3	M	SA= Supplier item number

Example: **PIA+1+1234:SA'**

PIA		OPTIONAL FIELD		
Item No.	Description EANCOM	Tipo	M/C	Value to report
4347	Product code function qualifier	AN..3	M	1 = Additional identification
7140	Item number	AN..35	M	Item code
7143	Item number type	AN..3	M	IN= Buyer Item number.

Example: **PIA+1+1234:IN'**

QTY		MANDATORY FIELD		
Item No.	Description EANCOM	Tipo	M/C	Value to report
6063	Quantity qualifier	AN..3	M	12 = Shipped quantity
6060	Quantity	AN..17	M	Shipped quantity

Example: **QTY+12:40'**

QTY		MANDATORY FIELD		
Item No.	Description EANCOM	Tipo	M/C	Value to report
6063	Quantity qualifier	AN..3	M	59 = Consumption units per shipping unit
6060	Quantity	AN..17	M	Consumption units per shipping unit

Example: **QTY+21:30'**

QTY				
MANDATORY FIELD				
Item No.	Description EANCOM	Tipo	M/C	Value to report
6063	Quantity qualifier	AN..3	M	2 = Delivered quantity
6060	Quantity	AN..17	M	Delivered quantity

Example: **QTY+2:40'**

QTY				
MANDATORY FIELD				
Item No.	Description EANCOM	Tipo	M/C	Value to report
6063	Quantity qualifier	AN..3	M	194 = Received and accepted
6060	Quantity	AN..17	M	Received and accepted

Example: **QTY+194:35'**

CNT				
MANDATORY FIELD				
Item No.	Description EANCOM	Tipo	M/C	Value to report
6069	Control qualifier	AN..3	M	2 = LIN number in the message
6066	Control value	AN..17	M	LIN number in the message

Example: **CNT+2:2'**

UNT				
MANDATORY FIELD				
Item No.	Description EANCOM	Tipo	M/C	Value to report
0074	Message segments number	AN..6	M	Message segments number
0062	Message reference number	AN..14	M	Message reference number

Example: **UNT+46+EW78444269'**

1.7. Receiving Advise example (RECADV D96A)

UNH+EW10295532+RECADV:D:96A:UN:EAN003' BGM+352::9+2038141+9'
DTM+137:20130213:102'
DTM+50:20130213:102'
RFF+AAK:D05-2820614'
RFF+DQ:0051578202'
RFF+ON:B040-682732'
NAD+MS+8422410000005::9'
NAD+MR+8400000000017::9'
NAD+BY+8422410000005::9'
NAD+SU+8400000000017::9'
NAD+DP+8422410150021::9'
CPS+1'
CPS+2+1'
PAC+++201'
LIN+1++8400000099462:EN' PIA+1+00393:IN'
QTY+2:144'
CPS+3+1'
PAC+++201'
LIN+2++8400000134071:EN' PIA+1+00456:IN'
QTY+2:448'
CNT+2:2'
UNT+25+EW10295532'