



Bon Preu Supplier EDI guide

Message = IFTMAN D96A

Versioned

Version	Date	Concept
1.3	03062024	Current Version

SUMARIO

1. OBJECTIVES OF THE USER GUIDE.....	2
1.1. Advantages of using EDI Standard.....	2
1.2. First steps in the communication. Operational with Bonpreu	2
1.3. Operational with BP	3
1.4. Messages, Versions and Mailboxes.....	3
1.5. Branching Diagram	4
1.6. Details of the segments used	5
1.7. Arrival notice example (IFTMAN D96A).....	9

1. OBJECTIVES OF THE USER GUIDE

The main objective of this EDI User Guide, for the electronic exchange of business documents with Bonpreu, is that it serves to clarify all the aspects involved in each one of the phases that are required to perform the exchanges in an efficient manner.

We consider it important that with this guide; identify all areas of our organization that are involved in the various operational in each time. They should also be clearly identified the areas involved of their organizations, so that the communication flow that occurs is most effective.

If for the first time, you will use the EDI system standard, we believe it appropriate to inform you that this guide contains technical aspects, of communication, EDI message, so that the IT areas of your organizations, they must have essential access to the same.

In the following chapters, you can find information related to the first steps that you should do to make the connection EDI between you and us. You can also find information related to the different documents that we will start to transmit and the content of the same.

1.1. Advantages of using EDI Standard

Currently, the supply chain between manufacturers and dealers requires that the flow of goods is as efficient as possible to avoid breakage of stock on the shelves, as well as expedite the payment of invoices.

To do this, the exchange of business documents, you need a tool to avoid delays. The tool or system of exchange is the standard EDI (Electronic Data Interchange), the use of which effectively allows the reduction of the cycle of the supply chain and the costs that you are incurring along the same.

As general advantages and particulars of the EDI standard in Bonpreu we can mention:

- Use a common language valid for all partners with the messages existing standards.
- Minor incidents in all of the administrative processes due to the non-manipulation of data.
- Cost of transmission is less than the load of data in information systems, compensating and amortised quickly the investment in software.

As a summary, we can say that it is a competitive advantage for any company, whether manufacturer, distributor or logistics operator.

1.2. First steps in the communication. Operational with Bonpreu

Those providers that it is the first time you go to use the System of Electronic Data Interchange it is necessary to know the parties involved in this system and the first steps to enter in this area.

- The Manufacturers, Distributors, dealers, Stores, Dealers and logistics Operators are the users of this system of electronic data interchange.
- Software vendors, who provide and implement programs to be able to make exchanges and to translate the different messages.
- Value-added networks (data transmission) to put their infrastructure in order to produce communication between the different users, and allow for the possible interchange between different networks and in different places.

For more information, you can contact with the EDI services supplier, SERES (902424342) or in his web (<http://es.grouperes.com>).

1.3. Operational with BP

Bon Preu informs in the orders the date and time in which the order must be delivered. The provider must respect that date and time.

Once the shipment is prepared and confirmed that it will be able to be delivered in the indicated time frame, the supplier must send an IFTMAN message with the required information.

- In the event the supplier will not be able to complete the delivery by the delivery date indicated in the order, you will need to contact Bon Preu to schedule a new date and time for delivery.
- In the event that the supplier has issued the IFTMAN and later will not be able to complete with the indicated, you will have to contact Bon Preu to agree on a new date and time and then send a new IFTMAN to replace the one previously sent.

If it was necessary for the supplier, Bon Preu is able to send by EDI the same order with the same order number and rectified delivery date and time.

An order is only rejected when the delivery does not correspond to what was requested. In that case, Bon Preu will issue a new order with a new order number.

1.4. Messages, Versions and Mailboxes

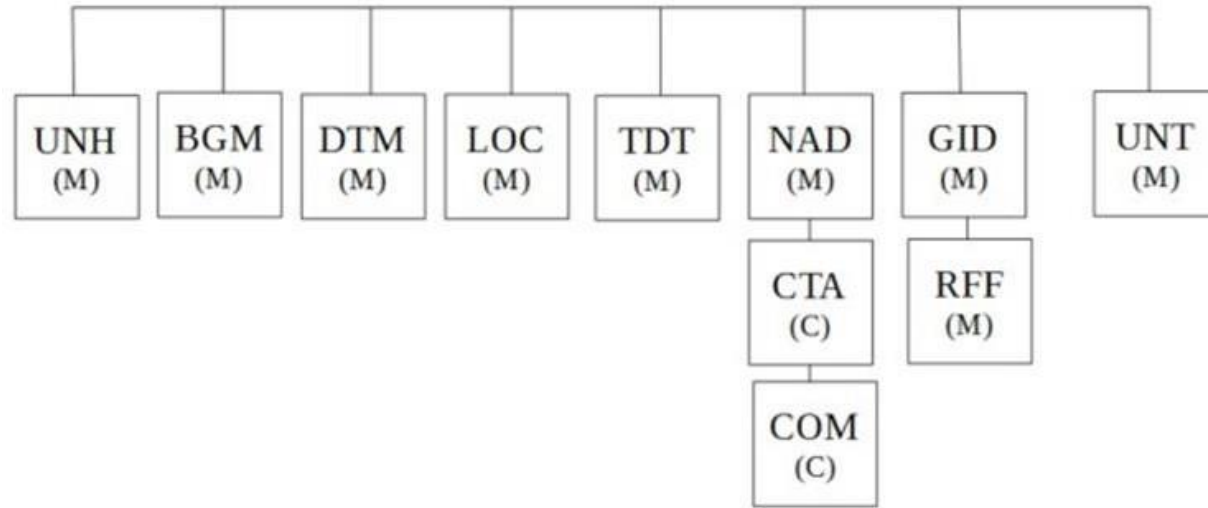
Messages that Bonpreu interchange will be:

- IFTMAN D96A

The Bonpreu mailboxes are:

- **Bonpreu production** COUNTRY=FR ADM=ATLAS PRMD=SERES O=ALLEGRO-ES OU1=EDI SURNAME=EDISERV GIVENNAME=8422410000005
 - **Bonpreu Test** COUNTRY=FR ADM=ATLAS PRMD=SERES O=ALLEGRO-ES OU1=EDI SURNAME=EDISERV GIVENNAME=8422410000005
-
- **Who Order (Buyer):** Bonpreu EAN Code
 - **Who receives the goods (Receiver):** EAN Store/Dealer Code
 - **Who is billed:** Bonpreu EAN Code (8422410000005)
 - **Who pays (the Payer):** Bonpreu EAN Code

1.5. Branching Diagram



1.6. Details of the segments used

UNH		MANDATORY FIELD		
Item No.	Description EANCOM	Tipo	M/C	Value to report
0062	Message reference number	AN..14	M	Sender's unique message reference. Sequence number of messages in the interchange
0065	Message type identifier	AN..6	M	IFTMAN = Arrival notice message
0052	Message type version number	AN..3	M	D
0054	Sub-version number of the message type	AN..3	M	96A = Directory EDIFACT D.96A
0051	Controlling agency	AN..2	M	UN= Agency responsible for the type of message.
0057	Code assigned by the association	AN..6	M	EAN001 = EAN Version control number.

Example: **UNH+EW666666+IFTMAN:D:96A:UN:EAN001'**

BGM		MANDATORY FIELD		
Item No.	Description EANCOM	Tipo	M/C	Value to report
1001	Name of the document or message	AN..3	M	781 = Arrival notice (goods)
1004	Name of the document or message	AN..35	M	Arrival notice number
1225	Message function, encoded	AN..3	M	9 = Original

Example: **BGM+781+52188+9'**

DTM		MANDATORY FIELD		
Item No.	Description EANCOM	Tipo	M/C	Value to report
2005	Date / time / period qualifier	AN..3	M	137 = Document date
2380	Date / time / period	AN..8	M	Document date
2379	Date / time / period format qualifier	AN..3	M	102 = Format CCYYMMDD

Example: **DTM+137:20180410:102'**

DTM		MANDATORY FIELD		
Item No.	Description EANCOM	Tipo	M/C	Value to report
2005	Date / time / period qualifier	AN..3	M	17 = Delivery date/time, estimated.
2380	Date / time / period	AN..8	M	Delivery date/time, estimated
2379	Date / time / period format qualifier	AN..3	M	203 = Format CCYYMMDDHHMM

Example: **DTM+17:201804101230:203'**

LOC		MANDATORY FIELD		
Item No.	Description EANCOM	Tipo	M/C	Value to report
3227	Location function code qualifier	AN..3	M	7 = Place of delivery
3225	Location name code	AN..25	M	Code specifying the name of the location.

Example: **LOC+7+541234567XXXX'**

TDT		OPTIONAL FIELD		
Item No.	Description EANCOM	Tipo	M/C	Value to report
8051	Transport stage qualifier	AN..3	M	20 = Main transport
8067	Transport modes, encoded	AN..3	M	10 = Marine transport 20 = Railway transport 30 = Road transport 60 = Multimodal transport
8179	Transport means description code	AN..8	D	31 = Truck
8212	Identification of the means of transport	AN..35	M	Transport plate number (Cabine plate number)

Example: **TDT+20++30+31++++::MATR CAB'**

NAD		OPTIONAL FIELD		
Item No.	Description EANCOM	Tipo	M/C	Value to report
3035	Part qualifier	AN..3	M	CA = Carrier
3039	Part identification, encoded	AN..35	M	Code specifying the identity of a party.
3055	Agency responsible for code list, coded	AN..3	M	9 = EAN (International Article Numbering Association)

Example: **NAD+CA+84XXXXXXXXXXXX::9'**

CTA		CONDITIONAL FIELD		
Item No.	Description EANCOM	Tipo	M/C	Value to report
3139	Contact function code	AN..3	M	TR = Transport contact
3413	Department or employee name code	AN..17	M	Department or employee name code
3412	Department or employee name	AN..35	M	Department or employee name

Example: **CTA+TR+X8568888V:Jose Luis'**

COM		CONDITIONAL FIELD		
Item No.	Description EANCOM	Tipo	M /C	Value to report
3148	Communication address identifier	AN..512	M	Driver's contact phone
3155	Communication address code qualifier	AN..3	M	TE = Phone number.

Example: **COM+675010203:TE'**

NAD		MANDATORY FIELD		
Item No.	Description EANCOM	Tipo	M/C	Value to report
3035	Part qualifier	AN..3	M	CN = Consignee
3039	Part identification, encoded	AN..35	M	Code specifying the identity of a party.
3055	Agency responsible for code list, coded	AN..3	M	9 = EAN (International Article Numbering Association)

Example: **NAD+CN+842241000005::9'**

GID		CONDITIONAL FIELD		
Item No.	Description EANCOM	Tipo	M/C	Value to report
1496	Goods item number	AN..5	M	Application generated number of the item lines within the arrival notice.

Example: **GID+1'**

RFF		CONDITIONAL FIELD		
Item No.	Description EANCOM	Tipo	M/C	Value to report
1153	Reference qualifier	AN..3	M	ON = Order number (buyer)
1154	Reference number	AN..35	M	Order number (buyer).

Example: **RFF+ON:W0400-391200'**

RFF		CONDITIONAL FIELD		
Item No.	Description EANCOM	Tipo	M/C	Value to report
1153	Reference qualifier	AN..3	M	DQ = Delivery note number
1154	Reference number	AN..35	M	Supplier delivery note number.

Example: **RFF+DQ:ALAB0003'**

UNT		MANDATORY FIELD		
Item No.	Description EANCOM	Tipo	M/C	Value to report
0074	Message segments number	AN..6	M	Message segments number
0062	Message reference number	AN..14	M	Message reference number

Example: **UNT+14+EW666666'**

1.7. Arrival notice example (IFTMAN D96A)

Example of an Arrival Notice message from a carrier identified by the EAN XXX location number to Bonpreu, consignee identified by the EAN YYY location number.

The Arrival Notice message is identified by number 52188 and sent on June 02, 2020.

The message informs of the arrival of the shipment at the place of delivery, which is the location identified by the EAN XXX location number by a truck with registration number 7575JPC. The estimated delivery time is 09:15 pm on June 4, 2020. The name, NIF and telephone number of the driver are respectively: Jose Luís, X85688888V and 675 01 02 03

The shipment consists of four items of merchandise corresponding to four delivery notes relating to four orders.

The delivery note-order pairs are:

(ALAB0001, W0400-391948)
(ALAB0002, W0400-391955)
(ALAB0003, W0400-391975) y (ALAB0004, W0400-391200)

Example IFTMAN:

```
UNH+EW666666+IFTMAN:D:96A:UN:EAN001'  
BGM+781+52188+9'  
DTM+137:20170802:102'  
DTM+17:201708040915:203'  
LOC+7+8422410150021'  
TDT+20++30+31++++:::7575JPC'  
NAD+CA+84XXXXXXXXXXXX::9'  
CTA+TR+X85688888V:Jose Luís'  
COM+675010203:TE'  
NAD+CN+8422410000005::9'  
GID+1'  
RFF+ON:W0400-391948'  
RFF+DQ:ALAB0001'  
GID+2'  
RFF+ON:W0400-391955'  
RFF+DQ:ALAB0002'  
GID+3'  
RFF+ON:W0400-391975'  
RFF+DQ:ALAB0003'  
GID+4'  
RFF+ON:W0400-391200'  
RFF+DQ:ALAB0004'  
UNT+23+EW666666'
```